



# VIRGINIA SAFARI PARK



**180-ACRE DRIVE-THRU ADVENTURE!**

**NATURAL BRIDGE**

# GUIDEBOOK



**A Visitor's Souvenir Guide  
to the Park Animals**

WELCOME TO

# VIRGINIA SAFARI PARK

The Virginia Safari Park opened in the Spring of 2000 because we felt there was a need and desire for people to be able to see wild animals in a much more natural environment than had previously been available. The Park supports wildlife conservation in 135+ countries globally through financial aid, public education, captive breeding, and habitat preservation.

At Virginia Safari Park you'll be able to see animals run and frolic with abandon... or block your path... or lay flat-out in the sun... the choice will be theirs; they are free to roam. Our staff is dedicated to helping our guests appreciate the beauty of our animals in the peaceful and natural setting of the Shenandoah Valley.

We encourage interaction by allowing visitors to feed the animals with our specialty grain. The experience of having a huge bull elk, ostrich, or giraffe only inches away, feeding from your bucket, is virtually impossible to describe. This unique animal encounter park appeals to all ages and is one of Virginia's top attractions.



## DISCOVER



### 3 BIRDS

Ostrich  
Emu  
Rhea

### 4 - 5 HOOFED, ANTLERED ANIMALS

Fallow Deer  
Japanese Sika Deer  
Axis Deer  
Pere David's Deer  
Rocky Mountain Elk

### 6 CAMEL, LLAMA

Dromedary Camel  
Bactrian Camel  
Llama

### 7 GIRAFFE

### 8 - 12 HOOFED, HOLLOW-HORNED ANIMALS

Blackbuck  
Scimitar Horned Oryx  
Nyala  
Eland  
White-Bearded Wildebeast  
Nilgai  
Bison  
Water Buffalo  
Bongo  
Yak  
Scottish Highland Cattle  
Watusi

### 12 PIGS

Kune Kune Pig  
Vietnamese Pot-Bellied Pig

### 13 ZEBRA

### 13 RHINO

### 14 ANIMAL ENCOUNTERS

### 15 - 18 SAFARI VILLAGE

## BIRDS

**STRUTHIONIFORMS:** Birds that resemble the Ostrich

### OSTRICH

*Struthio camelus*

**RANGE:** Africa

**DIET:** Grass

**HEIGHT:** 8 feet

**WEIGHT:** Up to 300 lbs

The Ostrich is the world's largest bird. Ostrich are fast animals, reaching speeds of 35 mph for up to 30 minutes. The Ostrich's long, powerful legs are its primary means of defense. Contrary to popular belief, the Ostrich does not bury its head in the sand. Males are black; females are gray. The Ostrich has the largest egg of all birds, but the egg is the smallest in comparison to the size of the bird.



#### FUN FACT

The Ostrich is the only two-toed bird!

### EMU

*Dromaius novaehollandiae*

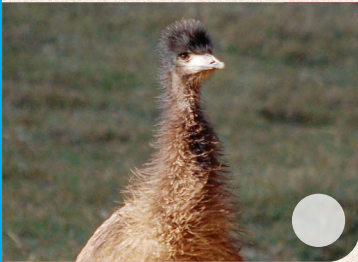
**RANGE:** Australia

**DIET:** Grains, berries, bugs, snakes, frogs

**HEIGHT:** 5 - 6 feet

**WEIGHT:** Up to 150 lbs

The Emu is the second largest flightless bird. It can reach speeds of 30 mph with strides covering nine feet. It loves to play and splash in pools of water and mud, and it is an excellent swimmer. The adult Emu can continue to produce offspring well past the age of 35 years; Emu eggs are avocado green and incubate for 54 days before hatching. The male Emu sits on the eggs until hatching and then cares for the chicks for their first eighteen months. The female Emu is noisy, filling the air sac in her chest and releasing a tympani-like sound. The male grunts like a wild boar.



#### FUN FACT

The Emu has been Australia's national bird since 1960.

### RHEA

*Rhea americana*

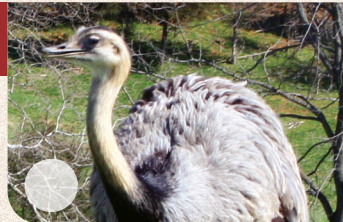
**RANGE:** South America

**DIET:** Grass, insects

**HEIGHT:** 5 feet

**WEIGHT:** 60 - 80 lbs

The Rhea is the fourth-largest flightless bird. Like the ostrich, the male builds a nest in which all the females of the harem lay their eggs. The Rhea runs rapidly on its long legs, at speeds of up to 40 mph. Rhea travel in family groups, of about six birds, except during mating season, when up to 25 may form a flock.



#### FUN FACT

A single male Rhea can incubate up to 50 eggs.

## MAMMALS

**ARTIODACTYLA:** Hoofed animals with an even number of toes

**FAMILY:** CERVIDAE Deer-Hoofed, antlered animals

### FALLOW DEER

*Cervus dama*

**RANGE:** Europe and Asia

**DIET:** Grasses, berries, nuts, herbs, bark, fungi, dead leaves

**HEIGHT:** 3 1/2 feet

**WEIGHT:** 65 - 225 lbs

The Fallow Deer can be chocolate brown, white, or spotted. It has flattened antlers, shaped like the palm of a human hand. Fallow Deer have very sharp vision. They can see small details at distances of over half a mile!



#### FUN FACT

In places where Fallow Deer are common, you will find trees stripped bare below the "browse line" of the deer - about four to six feet from the ground.

### JAPANESE SIKA DEER

*Cervus nippon nippon*

**RANGE:** Eastern Asia and Japan

**DIET:** Grass, acacia pods, wild melons, cucumbers, tubers

**HEIGHT:** 2 - 31/2 feet

**WEIGHT:** 55 - 120 lbs

Highly vocal, with over 10 individual sounds, ranging from soft whistles to loud screams, the Sika deer is generally nocturnal, active mostly from dusk to dawn. It is regarded as sacred in Japan. The Sika deer herd is composed of one adult male, with up to twelve adult females and their young.



#### FUN FACT

Sika is Japanese for "small deer."

### AXIS DEER

*Axis axis*

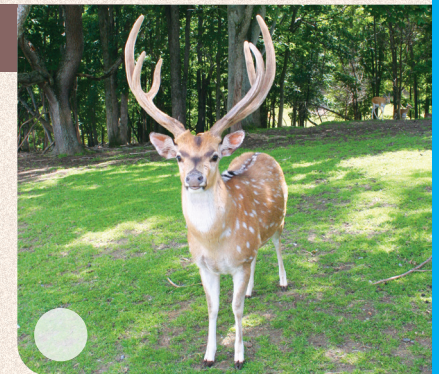
**RANGE:** India

**DIET:** Grasses, leaves

**HEIGHT:** 3 - 3 1/2 feet

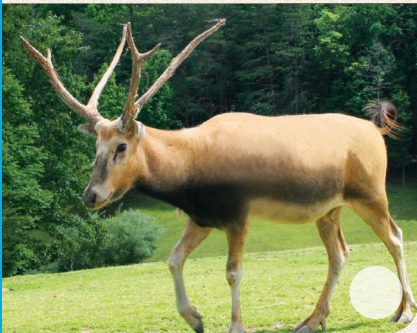
**WEIGHT:** 145 - 250 lbs

The Axis Deer is also called the chital which means "spotted" in Hindustani. The Axis Deer keeps its spots throughout its lifetime. It can also be distinguished by its bright white throat patch. The Axis Deer is often considered the most beautiful member of the deer family.



#### FUN FACT

The Axis Deer can live up to 22 years.



## PERE DAVID'S DEER

*Elaphurus davidianus*

**RANGE:** China

**DIET:** Grasses, water plants

**HEIGHT:** 3 1/2 - 4 feet

**WEIGHT:** Up to 440 lbs

Named for a French missionary working in China who first reported the breed to European scientists in the 1800s, these deer no longer live in the wild. The last herd remaining in China was eaten by Western

and Japanese troops participating in the Boxer Rebellion. With the plight of the deer publicized, all remaining Père David's Deer were gathered in England for the preservation of the species. The current world population stems entirely from this herd. The Père David's Deer has a long tail, wide hooves, and branched antlers.

### FUN FACT

The Chinese name for this deer translates as "four unlikes," because the animals appear to have the antlers of a reindeer, the neck of a camel, the foot of a cow, and the tail of a donkey.

## ROCKY MOUNTAIN ELK

*Cervus elaphus canadensis*

**RANGE:** Mountains of Western US and Canada

**DIET:** Grasses, shrubs

**HEIGHT:** 4 1/2 - 5 feet at shoulder

**WEIGHT:** 600 - 1,000 lbs

Also known as "wapiti," a Shawnee word meaning "white rump," the elk is a great jumper, similar in appearance to the antelope. It can run 30 mph for short distances and trot for miles. The male grows antlers at a rate of 1/2 inch to 1 inch per day in the summer, shedding them in the winter. The antlers can be as large as four feet from top to base and five feet wide. They may weigh up to 40 lbs. The moose is the only animal of the deer family larger than the elk.

### CAN YOU IMAGINE?

This Elk's antlers may weigh as much as a four year old child.



### FUN FACT

During mating season the male elk makes a distinctive noise, called bugling. It has been described as "loud, pleasant yodeling."

**ARTIODACTYLA:** Hoofed animals with an even number of toes

**FAMILY:** CAMELIDAE Camel, Llama

## DROMEDARY CAMEL

*Camelus dromedarius*

**RANGE:** Africa and the Middle East

**DIET:** Grass, salty vegetation

**HEIGHT:** 6 - 8 feet

**WEIGHT:** 1,000 - 1,450 lbs

The Dromedary Camel is well adapted to the harsh climate and conditions of the Desert. They can adjust their body temperature to conserve water, have an extra set of eye lashes and can close their nostrils to keep out sand during storms. Camels can go 10-15 days without water.



### FUN FACT

Dromedary Camels do not store water in their hump. It's where they store fat that gets turned into energy during scarce months of food.

## BACTRIAN CAMEL

*Camelus bactrianus*

**RANGE:** Mongolia and China

**DIET:** Grass leaves, shrubs, thorns, dry vegetation

**HEIGHT:** 7 - 8 feet

**WEIGHT:** Up to 1,800 lbs

The Bactrian Camel has two humps. Its back is shaped like the letter B—"B" for Bactrian!

The Bactrian Camel walks with its body weight resting on sole pads, so that only the front ends of the hooves touch the ground. This creates a "snowshoe" effect that prevents the camel from sinking in desert sand. It has thick calloused "knees" and chest to protect its joints and body from the extreme heat of the sand when lying down. Fat stored in the hump allows the animal to survive for long periods without food.



## LLAMA

*Lama glama*

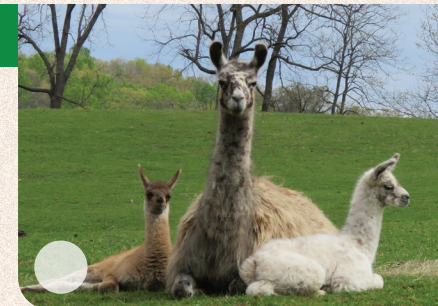
**RANGE:** South America

**DIET:** Grasses, lichens, herbs, shrubs

**HEIGHT:** 3 - 4 1/2 feet at the shoulder

**WEIGHT:** 150 - 350 lbs

Around 3500 BC, settled crop growing tribes domesticated the Llama, using it as both a beast of burden and a source of meat. Docile by nature, the Llama can carry up to 110 lbs for 15 miles a day at altitudes as high as 16,000 feet.



### FUN FACT

When upset, the Llama spits a foul-smelling liquid. WATCH OUT!

**ARTIODACTYLA:** Hoofed animals with an even number of toes

**FAMILY:** GIRAFFIDAE



## GIRAFFE

*Giraffa camelopardalis*

**RANGE:** Africa

**DIET:** Leaves and shoots of trees, shrubs

**HEIGHT:** Males: 15 - 20 feet

Females: 12 - 17 feet

**WEIGHT:** Males: 1,800 - 4,000 lbs

Females: 1,200 - 2,600 lbs

The Giraffe is the tallest animal in the world; its long neck has seven vertebrae, like most mammals, but they are definitely elongated! Each individual Giraffe has a unique spot pattern. The ancient Romans called the giraffe "camelopardalis," meaning "camel marked like a leopard." The gestation period for giraffes is about 15 months.

### FUN FACTS

- The Giraffe has a 22 inch prehensile (grasping) tongue, that it uses to grasp and pull its food from the trees.
- The patterns on each giraffe are unique, so no two are ever alike.
- Male giraffe can grow up to 17 feet tall!
- Giraffe babies are born already 6 feet tall - Now that's a big baby!
- Mother giraffe are pregnant for 14.5 months!

## WANT TO GET CLOSER?

Get ready to go eye-to-eye with the world's tallest land mammal while feeding a tasty lettuce treat! Try one of the ultimate Safari Park experiences only at the giraffe feeding station in the Safari Walk-Thru Village.



**ARTIODACTYLA:** Hoofed animals with an even number of toes

**FAMILY:** BOVIDAE Hoofed, Hollow-Horned Animals

## BLACKBUCK

*Anitlope cervicapra*

**RANGE:** India

**DIET:** Grasses, leaves, pods, shrubs, flowers

**HEIGHT:** 2 1/2 feet at shoulder

**WEIGHT:** 70 - 95 lbs

Blackbuck have long, ringed horns that spiral with three to four turns and are up to 28 inches long. Blackbuck antelope are extremely fast animals, reaching speeds of almost 50 mph when necessary. Their name comes from the dark coat the dominate males achieve. Females are a light tan.



### FUN FACT

The males rut, or fight and spar, year round. Although they rarely hurt each other, during mating season only one male establishes dominance.



## SCIMITAR HORNED ORYX

*Oryx dammah*

**RANGE:** North Africa

**DIET:** Grass, acacia pods, wild melons, cucumbers, tubers

**HEIGHT:** 4 feet

**WEIGHT:** Up to 450 lbs

The Scimitar Horned Oryx is a true desert animal, able to live for weeks without water. It is not extinct in its native Sahara and its habitat is confined to a small area between Mauritania and the Red Sea. It has become easy prey to mounted and motorized hunters, and may face extinction in the near future.

### FUN FACT

The Scimitar Oryx is easily tamed and was first domesticated by ancient Egyptians.

## NYALA

*Tragelaphus angasii*

**RANGE:** South Africa

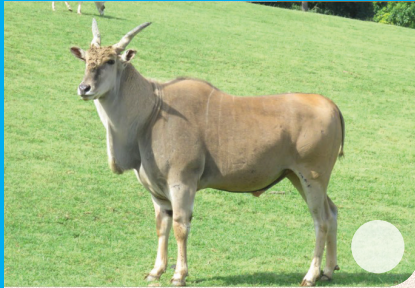
**DIET:** Leaves, fruits, and grasses

**HEIGHT:** 2 1/2 feet at shoulder

**WEIGHT:** 120 - 300 lbs

Nyala are very shy and are very cautious when approaching open spaces. Most sightings of wild Nyala are at water holes. They are most active during the early morning and late afternoon, resting in thick brush during the hottest times of the day. The alarm call is a sharp, dog-like bark.





## ELAND

Tauritragus oryx

**RANGE:** Africa

**DIET:** Leaves, grasses; some fruit

**HEIGHT:** 41/2 - 6 feet at shoulder

**WEIGHT:** 1,000 - 2,100 lbs

The Eland is the largest antelope in the world. In its native Africa, it is found primarily in national parks. Over the past

several decades game ranching has caused numbers to increase. The Eland looks much like an Ox. Both the males and the females have spiking horns that twist straight back from the face.

### FUN FACT

When fleeing from danger, herd members often leap over one another.

### HAVE YOU HEARD THE GNUS?

In their native Africa, wildebeest migrate annually in search of fresh pastures. More than a million animals may be traveling in the herd, including Thomson's gazelles and plains zebras as well as wildebeests.

## WHITE-BEARDED WILDEBEEST

Connochaetes taurinus

**RANGE:** Africa

**DIET:** Grasses

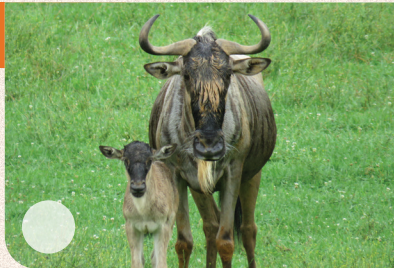
**HEIGHT:** 4 1/2 feet at shoulder

**WEIGHT:** 350 - 500 lbs

The Wildebeest is also known as a gnu.

Both the male and the female are horned and bearded. It is primarily sedentary, which makes

it an excellent target for predators. At night, wildebeests sleep on the ground in rows, allowing them both group security and space to run quickly.



### FUN FACT

A baby Wildebeest can stand and run 3 - 7 minutes after its born.



## NILGAI

Boselaphus tragocamelus

**RANGE:** India

**DIET:** Trees, shrubs, fruit, sugar cane

**HEIGHT:** 4 feet at shoulder

**WEIGHT:** 500 lbs

An elegant animal and the largest antelope in India, the Nilgai is named for the color of the male, the "blue bull." It has slightly longer front legs than hind legs and a long, pointed head. While females live in a herd of up to ten, the male is generally solitary. Nilgai bulls fight each other on their knees for available females.

## BISON

Bison bison

**RANGE:** North America

**DIET:** Grasses, sedge, herbs

**HEIGHT:** 5 - 6 feet

**WEIGHT:** Up to 2,000 lbs

Bison are the largest mammals in North America. Hunting decimated the bison population during the 18<sup>th</sup> century. In 1800, 60 million bison roamed the open plains of the US and Canada, but by 1900 only 100 remained. Happily, the bison is no longer endangered. More than 40,000 now live in state and national parks, zoos and ranches.

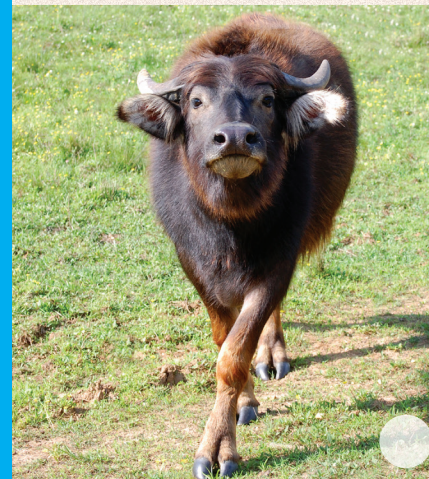


### FUN FACT

Despite its enormous and clumsy appearance, the bison has amazing speed and agility, reaching speeds of 30 mph.

### IS IT A BISON OR A BUFFALO?

**BOTH.** Either. Sort of. Bison is the correct term. Asian Water Buffalo and African Cape Buffalo are the only "true" buffalo. On the other hand, you're in good company in the US if you want to call it a buffalo, most folks do.



## WATER BUFFALO

Bubalus bubalis

**RANGE:** Asia

**DIET:** Grasses, water, plants

**HEIGHT:** 5 - 6 feet

**WEIGHT:** Up to 2,200 lbs

Although there are less than 3,500 water buffalo in the United States, there are more than 180 million worldwide. The Water Buffalo is the primary draft animal of southern China and the rice-growing countries of southeast Asia.

### FUN FACT

Water Buffalo love to wallow in any water source. Even mud



## BONGO

*Trageiaohus euryceros isaaci*

**RANGE:** East Africa and Kenya

**DIET:** Leaves, flowers, twigs

**HEIGHT:** 4 1/2 feet

**WEIGHT:** 600 lbs

Bongos inhabit close, dense vegetation. They have a highly advanced social

organization. Males tend to be partially solitary in the wild. Females and offspring coexist. Bongos snort, grunt, moo, and bellow out a "beat like" call.

### FUN FACT

The pigmentation in the coat rubs off quite easily. There are anecdotal reports that rain water running off a Bongo may be tinted red with pigment.

## YAK

*Bos grunniens*

**RANGE:** Central Asia, North of the Himalayas

**DIET:** Lichen, herbs, grasses

**HEIGHT:** 5 feet at shoulder

**WEIGHT:** Up to 2,000 lbs

The Yak is a wild Ox, first domesticated in Tibet more than 3,000 years ago. While domestic Yak are now common, only 500 exist in the wild today. The Yak is agile, a good climber, and a great swimmer. Its long hair hangs nearly to the ground like a fringe-protecting it while it roams in valleys and icy mountains at altitudes of nearly 19,000 feet.

### FUN FACT

The Yak's digestive system helps to keep it warm. The contents of its stomach ferment at the internal temperature of 104 degrees Fahrenheit. This provides a "central heating system" that allows the Yak to survive at extremely low temperatures.



## SCOTTISH HIGHLAND CATTLE

*Bos taurus taurus highland*

**RANGE:** Scotland

**DIET:** Grasses, brush

**HEIGHT:** 4 feet at shoulder

**WEIGHT:** 750 - 1,200 lbs

The Scottish Highland Cow is gentle and easily handled. It is a strong breed with excellent resistance to disease

and for that reason, was first imported to the US in the 1800's by western cattlemen. The Scottish Highland sheds its long hair in the summer, which allows it to adapt to many climates.

### FUN FACT

The cow's beautiful long hair acts as a rain slicker to easily shed rain. Its short furry undercoat provides good insulation year 'round.

## WATUSI

*Bos taurus*

**RANGE:** Africa

**DIET:** Grasses

**HEIGHT:** 4 - 5 1/2 feet at shoulder

**WEIGHT:** 1,000 - 1,600 lbs

Also known as Ankole, the Watusi is named after the Watusi tribe of Africa. It dates back at least 6,000 years and is known as the "cattle of kings" because of its long horns. The horns can measure up to 10 feet from tip to tip with a base diameter of six inches.



### FUN FACT

The Watusi's horns act as a cooling device, just like the radiator on your car. Blood circulates through the horn to cool before returning to the body.

**FAMILY:** SUIDAE Pigs



## KUNE KUNE PIG

*Sus scrofa domesticus*

**RANGE:** New Zealand

**DIET:** Grasses

**HEIGHT:** 1 - 2 feet at shoulder

**WEIGHT:** 175 - 265 lbs

The Kune Kune Pig is one of the smallest breeds of pig. Pronounced "Cooney, cooney" it means fat and round in

the Maori language. Kune Kune Pigs are intelligent, resourceful, and affectionate, with a passion for food and a good scratch.

### FUN FACT

Kune Kune Pigs were in danger of extinction until a breeding program was started in the 1970's in New Zealand.

## VIETNAMESE POT-BELLIED PIG

*Sus scrofa*

**RANGE:** Jungle of China and Vietnam

**DIET:** Roots, tubers, shoots, berries, fruits, grubs, worms, eggs, small quantities of meat

**HEIGHT:** 10 - 12 inches

**WEIGHT:** 125 lbs

The Pot-Bellied Pig's nickname comes from its appearance. Its backbone is bent, like a saddle, causing its abdomen to drag nearly to the ground. Introduced to the US as an exotic pet in 1985, the Pot-Bellied Pig can be extremely destructive indoors. Many Pot-Bellied Pigs purchased as pets have ended up in the care of animal rescue organizations.



### FUN FACT

The Pot-Bellied Pig has the shortest name of any animal: It's Vietnamese name only has one letter: "i".

**FAMILY:** EQUIDAE Zebra

## GRANT'S ZEBRA

*Equus burchellii boehmi*

**RANGE:** West Africa and Zimbabwe

**DIET:** Grasses

**HEIGHT:** 5 feet

**WEIGHT:** 500 - 700 lbs

Each Zebra's stripes are unique, just as human's fingerprints are unique. The Zebra's color pattern make it extremely visible against green backgrounds but almost invisible in tall grasses. Herds are composed of one male and one to six females and their young. Young males leave the herd in their second year and form bachelor groups.



### FUN FACT

Zebbras sleep in turns so that some member of the herd is always awake.

**PERISSODACTYLA:** Hoofed animals with an odd number of toes

**FAMILY:** RHINOCERIDAE Rhinos



## SOUTHERN WHITE RHINO

*Ceratotherium simum simum*

**RANGE:** Southern Africa

**DIET:** Grasses

**HEIGHT:** 5 - 6 feet

**WEIGHT:** 4,000 - 6,000 lbs

White Rhinos are one of 5 Rhino species and are the most abundant out of all of them. They can run up to 25 mph.

Their gestation period is 16 months long! Water can be scarce in Africa, so Rhinos can go up to 4 days without water. They can live to be over 40 years old and are the 2nd largest land animal. Rhinos are very social animals and can live in groups of up to 20 individuals, mostly mothers and calves.

### FUN FACT

All horns (antelope, cows, goats, etc.) are made of Keratin. The Rhino's horn doesn't have a core like the other animals, that is why they are different.

## RHINO CONSERVATION EFFORTS

In the wild, it is estimated that one rhino is killed every ten hours for its horn. Rhino gestation is 16 months, resulting in a slow increase in population numbers toward recovery. Therefore, each calf born is a reason to celebrate! Rhino mothers, Samira and Kya, were imported from South Africa in 2012 with two other White Rhinos to protect them from rampant poaching. To date, this group of imported rhinos has produced eight healthy calves. The Virginia Safari Park is dedicated to saving the future of wild rhinos and has donated more than \$12,000 in the past three years to the International Rhino Foundation.

# Animal Encounters

## Rhino Encounter

\$50 per person



## Penguin Encounter

\$40 per person



## Sloth Encounter

\$40 per person



Take home  
souvenir feed cups!

**Thank you for your help!**  
A percentage of your encounters go directly to our conservation programs.





DON'T FORGET TO STOP BY THE

# SAFARI TRADING POST GIFT SHOP

located near the entrance

- Huge selection of gifts and souvenirs for all ages.
- Cold drinks, quick snacks
- Additional animal feed
- Season passes



*pick up souvenir giraffe feed cups here!*



located in the Village

## HUNGRY?

We've got you covered!

- Pizza
- Burgers
- Hotdogs
- French fries
- 32oz Ices
- and More!



### KIDS MEAL

Chicken tenders or hot-dog, with fries, Capri Sun, & Souvenir Safari Hat!



# SAFARI VILLAGE



FEED BUNDLES  
AVAILABLE IN  
THE GIFT SHOP!

## VISIT OUR SAFARI VILLAGE

Stretch your legs and unwind on the paths of the Safari Village. Waddle next to a penguin, feed a giraffe, or feed your barnyard favorites. Visit with lemurs, giant anteaters, monkeys, tigers, and cheetahs or get up close with a giant tortoise. Don't forget to visit the Budgie Adventure Aviary and the Reptile House!

### King Cheetah

Virginia Safari Park is the only park in the United States where you can view these rare cats!



### Petting Area

Enjoy feeding and petting all of your farmyard favorites, including goats and kids! **Feed Cups are available in the Gift Shop.**



### Budgie Aviary

Step inside to feed the sweet and colorful tiny birds, which will land on your hand. **Budgie Feeding Sticks are available in the Gift Shop.**



### Giraffe Tower

Feed the giraffes romaine lettuce on the giraffe-viewing platform! **Romaine lettuce w/ souvenir cup available at Gift Shop.**



### Tiger Territory

Observe our Bengal tigers as they play in their yard, lounge in the shade, or cool off in their pool.



### Penguin Pool

Waddle by to visit our African penguins. Be sure to check out our penguin encounters too!



### Kangaroo Walk-About

Enjoy a walk or a hop through the Kangaroo Walk-About.



# PARK RULES

## REMAIN IN YOUR VEHICLE!

Anyone found outside of their vehicle will face immediate expulsion from the park.

- **Feed only from the buckets. NOT FROM YOUR HANDS!** Animals may nip. Scattering grain will allow shy animals to come to your vehicles.
- **WHEN FEEDING**, pull over to the right side on flat areas to let others pass.
- **ALL DOORS MUST REMAIN CLOSED. NO SLIDING OR HATCH DOORS MAY BE OPEN. OPEN WINDOWS.**
- **Keep windows rolled down all the way when feeding animals. NEVER** roll up window when animal is attempting to feed. Injury to the animal or the vehicle is possible.
- **If you are in need of help or assistance, honk your horn to notify the park ranger.**
- **NO OUTSIDE ANIMAL FEED ALLOWED.**
- **NO PETS ALLOWED ON PARK PROPERTY.**
- **NO SMOKING ALLOWED**, unless in designated area.

## NOTICE: PLEASE READ

All persons entering Virginia Safari Park do so at their own risk. We will not be responsible for injuries to any individual or damage to any vehicle.